

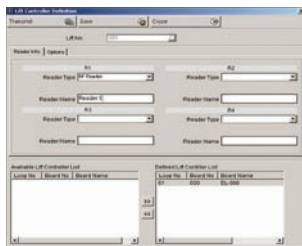
Elevator Control & Monitor Software

STARWATCH ELEVATOR PRO



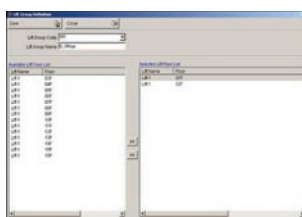
Key Features

- Apply time schedule to reader
- Restriction on using Elevator about user and visitor
- Direct control on Elevator by Software
- Report of the present condition on using Elevator of visitor
- Elevator user report, Elevator event report
- Compatible with ELEVATOR384, RF10, RF20, RF30, RFK101, RF TINY



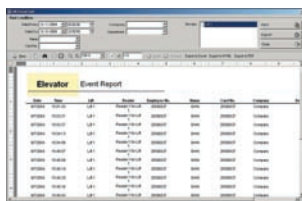
Elevator Controller Definition

- Elevator controller definition sets ELEVATOR384 controller which will integrate with elevator. In this setting, you may configure available option for all proximity readers and biometric readers
- Each ELEVATOR384 control up to 12 floors. For building with more than 12 floors need additional ELEVATOR384



Elevator Access Group Definition

- Elevator Access Group Definition is to provide floor access authorization to users
- Various Access groups can be set for different access options



Elevator Event History Report

- Event history all users may be seen or printed
- Report may be exported in variety of format such as PDF, HTML, XLS. Exported reports may be transferred to other person via internet
You may also save data through exporting to Excel file

ELEVATOR384 Configuration

