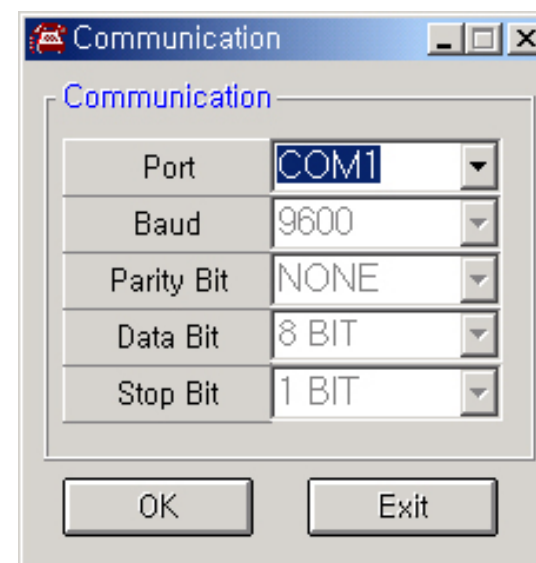
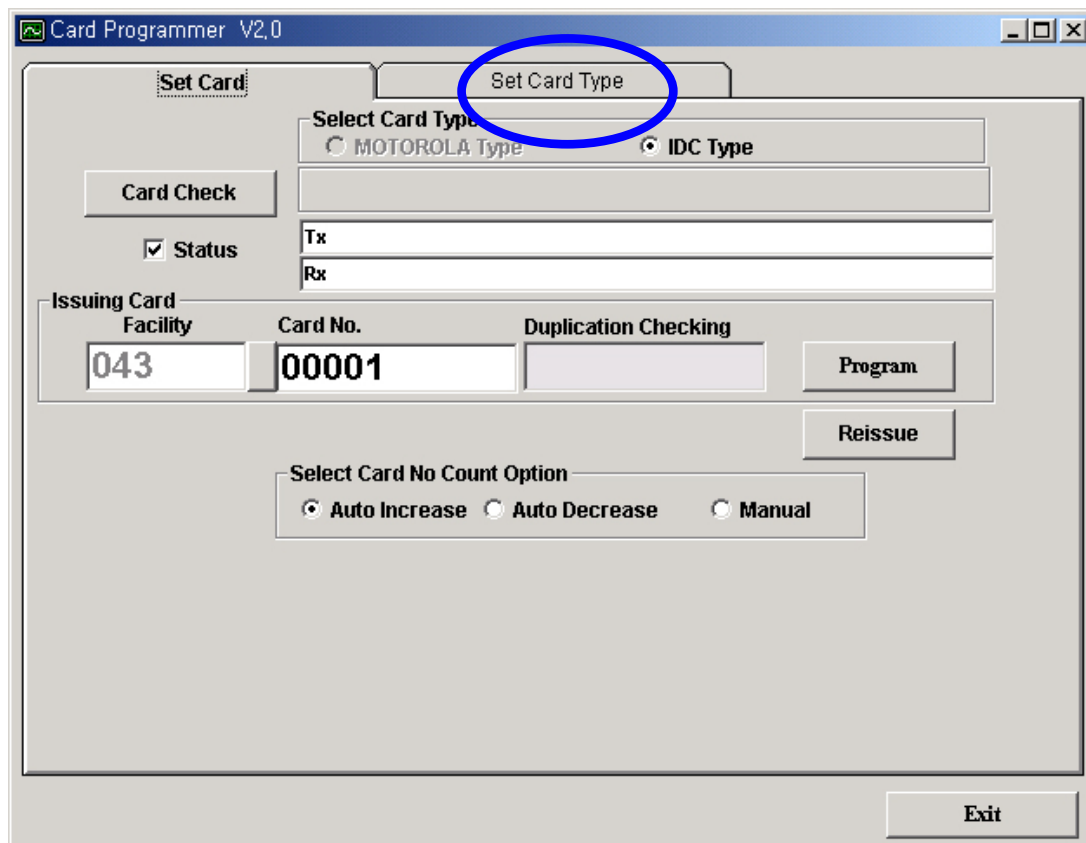


PRG1000 125khz RFID Card Programmer Quick Manual

1. COM Port definition



1. Click set card type and button of “set port” then the communication window will be popped up.

PRG1000 125khz RFID Card Programmer Quick Manual

3. Card number cording

The screenshot shows the 'Card Programmer V2.0' software window. The 'Set Card' tab is active. It features a 'Card Check' button and a checked 'Status' checkbox. Below these are 'Tx' and 'Rx' input fields. The 'Issuing Card' section contains a 'Facility' field with '043', a 'Card No.' field with '00001', and a 'Duplication Checking' field. To the right of these fields are 'Program' and 'Reissue' buttons. At the bottom, there is an 'Exit' button. The 'Select Card Type' section has radio buttons for 'MOTOROLA Type' and 'IDC Type', with 'IDC Type' selected. The 'Select Card No Count Option' section has radio buttons for 'Auto Increase', 'Auto Decrease', and 'Manual', with 'Auto Increase' selected.

3. Type the card number to be corded and click program.

Auto increase: card number will be increased automatically.

Auto decrease: card number will be decreased automatically.

Manual: it will be as typed.